
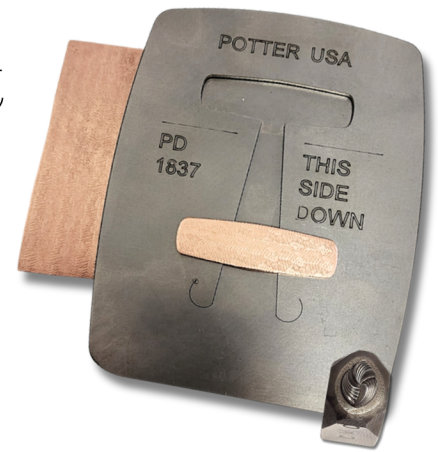




# Panel Bracelet Instructions

by Annie Pennington

1. Use a rolling mill to texture a 16g piece of copper with RMP393. Do not anneal after texturing.
2. Use PD1837 to cut a blank from the textured copper. Use a saw, files, and abrasives to remove the tab and smooth the edges of the blank.
3. Use a drill bit to drill a hole near one end of the blank. Saw out a rectangle approx. 1/4" wide by 1/8" tall. File and sand the inner edges of the rectangle.
4. Use the large synclastic bracelet former in the hydraulic press or a mallet and bracelet mandrel to form the panel into a curve that roughly matches the curve of the top of your wrist.
5. Measure the diameter of the tubing or rod for the catch. Drill a hole at the opposite end of the panel the same diameter. The tubing/rod should be a tight fit in the hole. Refine the edges of the hole.
6. Melt a blob of sterling silver, and press it solid into impression die BR-RT314. Trim the flange and finish as desired. This will become the catch.
7. Use hard solder to solder one end of the tubing/rod onto the back of the silver stamping. Pickle and clean the assembly.
8. Insert the tubing/rod into the hole in the panel. Adjust the tubing/rod so the silver stamping is elevated above the surface an amount equal or slightly more than the diameter of the leather cord.
9. Use medium solder to solder the tubing/rod to the panel from the underside. Pickle, then file the underside of the tubing flush with the panel and finish as desired.
10. Fold the leather cord in half, and tie an overhand knot near the center. The loop must be large enough to fit over the catch.
11. Insert both ends of the leather through the rectangle hole on the opposite side of the panel. Adjust the length until it fits your wrist with a little bit of slack.
12. Fold the ends over, and use 20g wire to make a tight wrapped section to secure the ends in place. Trim the ends. 



## Tools & Materials

- Panel Bracelet Bundle: PD1837, RMP393, BR-RT314
- 16g copper sheet
- Scrap sterling silver
- Silver, copper, or brass tubing or rod: ~1/8" diameter, ~1/2" long
- Silver, copper, or brass round wire: 20g, ~10" long
- Round leather cord: ~20"
- Potter USA hydraulic press
- Bracelet former kit w/large synclastic former or mallet and bracelet mandrel
- Jeweler's saw w/saw blades (any size)
- Soldering, pickling, and finishing materials
- General bench tools (files, drill bits, abrasives, etc.)

Underside



Side View

